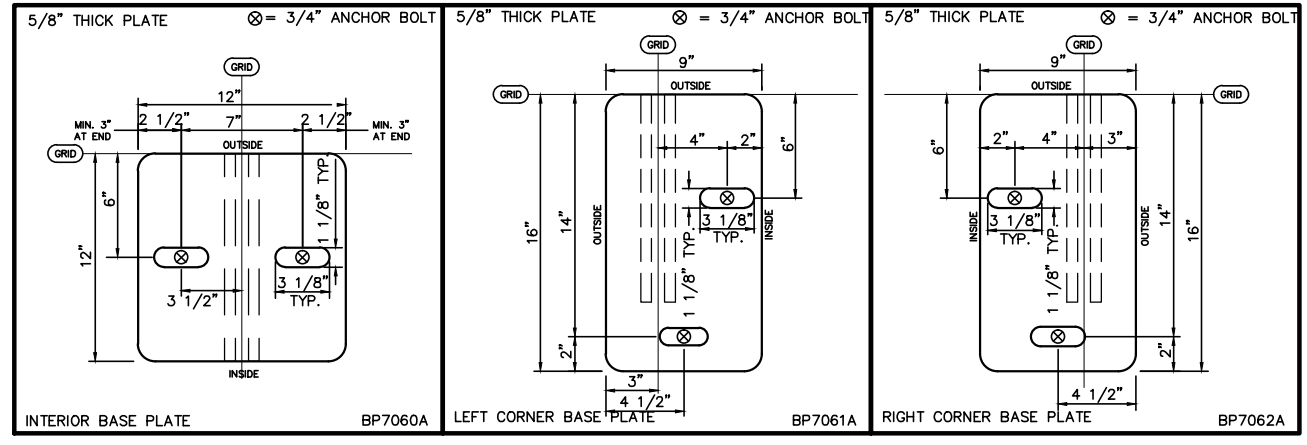


← EAVE STRUCTURE (FABRIC - EAVE TO EAVE / PEAK TO EAVE) SHOULDER STRUCTURE (FABRIC - GROUND TO GROUND / RIDGE TO GROUND) →

150 VP COMPONENT SCHEDULE - INTERIOR TRUSS			
MARK	PART No.	DESCRIPTION	COMMENT
A	TR7076A	130'/140'/150'/160' PEAK TRUSS	
B	TR7150A	150' INSERT TRUSS	
C	CU7075A	130'/140'/150'/160' STRAIGHT TRUSS	
D	CU7082A	130'/140'/150'/160' SHOULDER TRUSS	
E	CU7111A	130'/140'/150'/160' LEG TRUSS	
F	IN79401A	INSERT ROUND PEAK - COMMON	
G	IN79400A	INSERT ROUND SHOULDER - COMMON	
H	TR7091A	INSERT EAVE - COMMON	2'-0" EAVE

PROFILE MASS = 4900 LBS



Calhoun Superstructure Ltd. 3702 Bruce Rd #10 Terra, Ontario, Canada N0H 2N0 800-365-3994 www.calhounsuperstructure.com		
NAME: K M DATE: 02/07/2015 CHECKED: R H ENG. APPR.: ---	150' VP PROFILE	
PROPRIETARY AND CONFIDENTIAL THE INFORMATION CONTAINED IN THIS DRAWING IS THE SOLE PROPERTY OF CALHOUN SUPERSTRUCTURE. ANY REPRODUCTION IN PART OR AS A WHOLE WITHOUT THE WRITTEN PERMISSION OF CALHOUN SUPERSTRUCTURE IS PROHIBITED.		VP-150 ZEE SCALE: N T S SHEET 1 OF 1