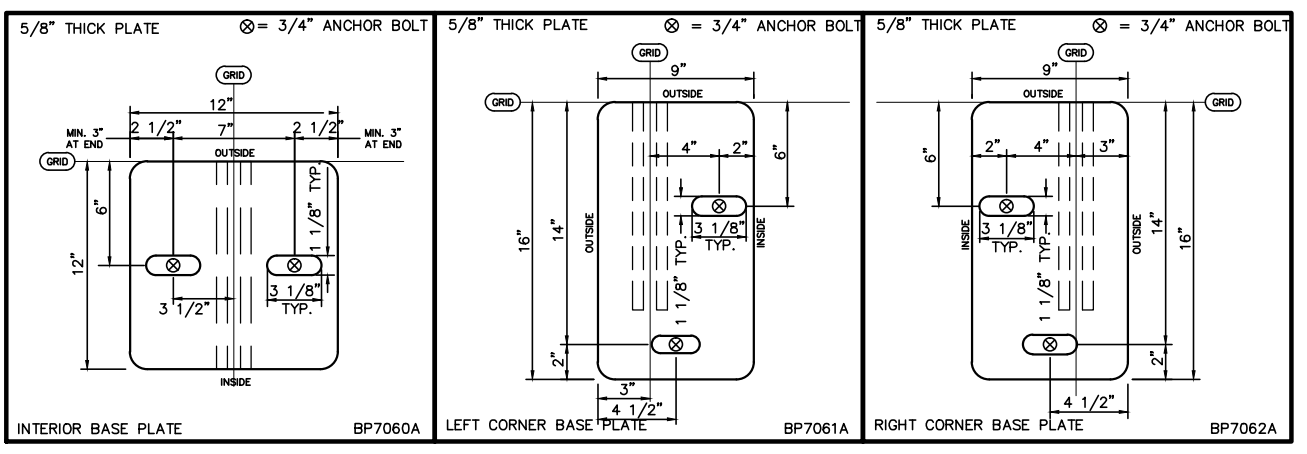


← EAVE STRUCTURE (FABRIC - EAVE TO EAVE / PEAK TO EAVE) SHOULDER STRUCTURE (FABRIC - GROUND TO GROUND / RIDGE TO GROUND) →

110 VP COMPONENT SCHEDULE - INTERIOR TRUSS			
MARK	PART No.	DESCRIPTION	COMMENT
A	CU7092A	110/120' PEAK TRUSS	
B	TR76110A	110' INSERT TRUSS	
C	CU7091A	110/120' STRAIGHT TRUSS	
D	CU7089A	110/120' SHOULDER TRUSS	
E	CU7090A	110/120' LEG TRUSS	
F	IN79401A	INSERT ROUND PEAK - COMMON	
G	IN79400A	INSERT ROUND SHOULDER - COMMON	
H		INSERT EAVE - COMMON	2'-0" EAVE

PROFILE MASS = 3800 LBS



		Calhoun Superstructure Ltd. 3702 Bruce Rd #10 Tara, Ontario, Canada N0H 2N0 800-365-3994 www.calhounsuperstructure.com	
		NAME	DATE
		DRAWN	22/06/2015
		CHECKED	R H
		ENG. APPR.	---
		<small>PROPRIETARY AND CONFIDENTIAL THE INFORMATION CONTAINED IN THIS DRAWING IS THE SOLE PROPERTY OF CALHOUN SUPERSTRUCTURE. ANY REPRODUCTION IN PART OR AS A WHOLE WITHOUT THE WRITTEN PERMISSION OF CALHOUN SUPERSTRUCTURE IS PROHIBITED.</small>	
No. DESCRIPTION DATE		SIZE DWG. NO. SHEET D VP-110 ZEE 1 OF 1	SCALE: N T S